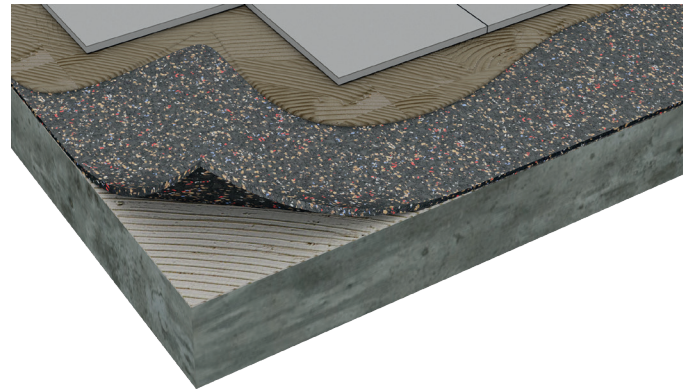


T04 MAXIMUM



Agglomerated cork and recycled rubber underlayment for impact noise, crack suppression and easy installation



PRODUCT SPECIFICATION

Resilient acoustic underlayment made of agglomerated cork and recycled SBR (Styrene Butadiene Rubber) with PU (polyurethane) elastomer bonding agent for impact noise insulation for ceramic, natural stone tiles, LVT and wood, with a density up to 850kg/m³.

KEY FEATURES

- ▶ Homogeneous material produced from cork and recycled rubber granules with the same size (0.5-1mm)
- ▶ High durability and long term resilience
- ▶ High performance
- ▶ Low residual indentation and free of migration of plasticizers
- ▶ Lighter and improved glue adhesion when compared with 100% rubber solutions

PHYSICAL AND MECHANICAL PROPERTIES

Specific Weight (kg/m ³ lb/ft ³) ①	2mm	700-850 40-53
	3, 5 and 10mm	490-570 30-36
Tensile Strength (kPa) ①		> 250
Compression at 0.7MPa (%) ①		25-45
Recovery after 0.7MPa (%) ①		> 80

① ISO 7322

TECHNICAL PROPERTIES

Flooring		Wood/LVT		Ceramic/Natural Stone	
Thickness	mm	2	3	5	10
Thermal Resistance (TR) ①	m ² .°C/W	0.0231	0.0346	0.050	0.099

Floor Durability

Punctual Conformability (PC) ①	mm	1.1	2.3	3.5	8.0
Compressive Strength (CS) ①	kPa	> 60	> 200	NA	NA
Compressive Creep (CC) ①	kPa	—	—	60	—

① EN 16354 NA Not applicable ● Yes ○ No

ACOUSTIC RESULTS

ASTM E413 | ASTM E989-89

Flooring		LVT	LVT	Engineered wood	Ceramic	Ceramic
Flooring thickness	mm	6	6	9,1	8	10
Underlayment thickness	mm	2	3	5	5	10
IIC Δ IIC	dB	76 23	76 25	51 22	51 —	76 —
STC	dB	76	76	51	55	71
System (Glued Floating)		Floating	Floating	Glued	Glued	Glued
System (Ceiling)		●	●	○	○	●

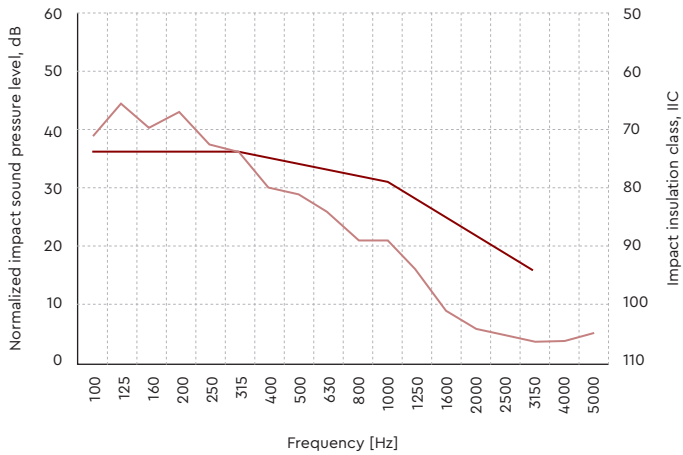
● Yes ○ No

ISO 1625-1

Flooring		LVT	LVT	Ceramic	Ceramic	Ceramic
Flooring thickness	mm	6	9,1	6	8	10
Underlayment thickness	mm	2	3	3	5	10
IS	dB	18	17	16	20	21
System (Glued Floating)		Floating	Floating	Floating	Floating	Floating
System (Ceiling)		○	○	○	○	○

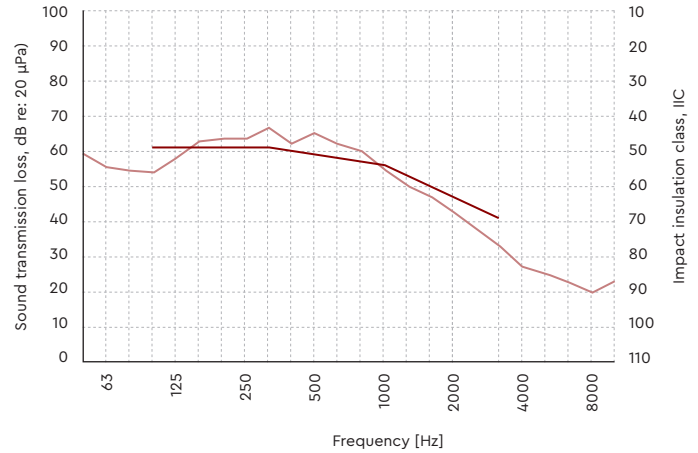
● Yes ○ No

Impact Insulation Class (IIC) · Ceramic floor (10mm)
· T04 (10mm) · Glued



— L_n (dB) — Fitted reference contour (dB)

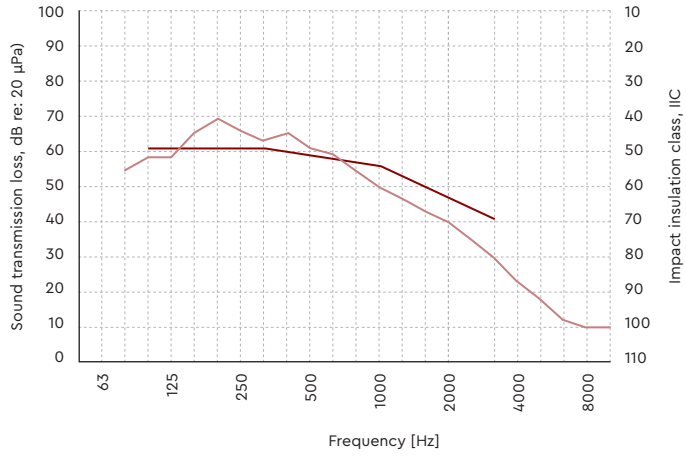
Impact Insulation Class (IIC) · Ceramic Floor (8mm)
· T04 (5mm) · Glued



— Normalized impact SPL — Contour curve

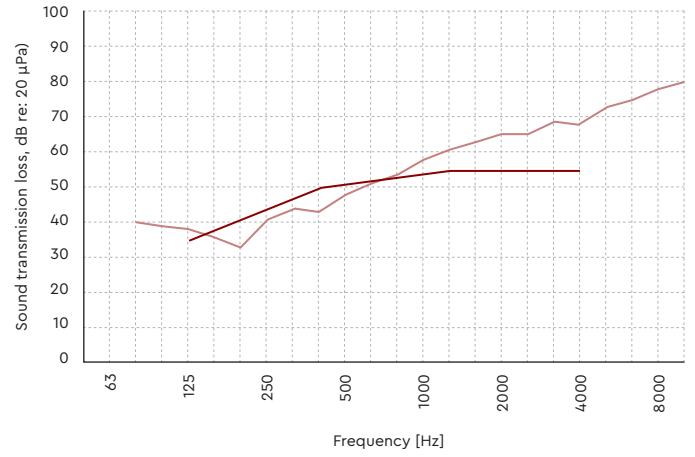
ACOUSTIC RESULTS

Impact insulation Class (IIC) · Engineered hardwood floor (9.1mm) · T04 (5mm) · Floating



Normalized impact SPL Contour curve

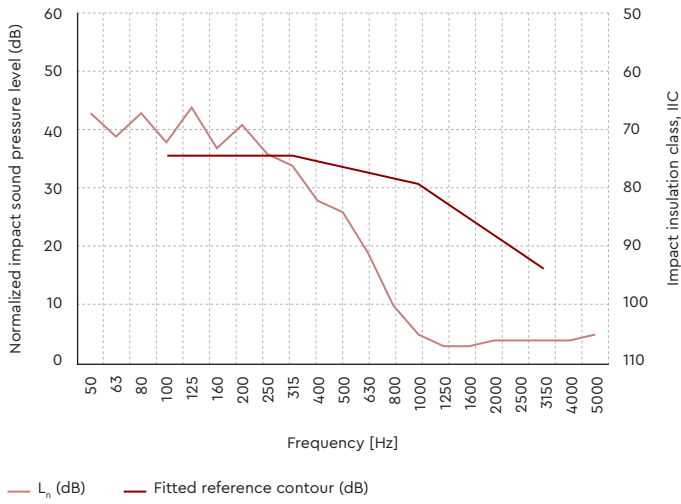
Sound Transmission Class (STC) · Engineered hardwood floor (9.1mm) · T04 (5mm)



Specimen TL Contour curve

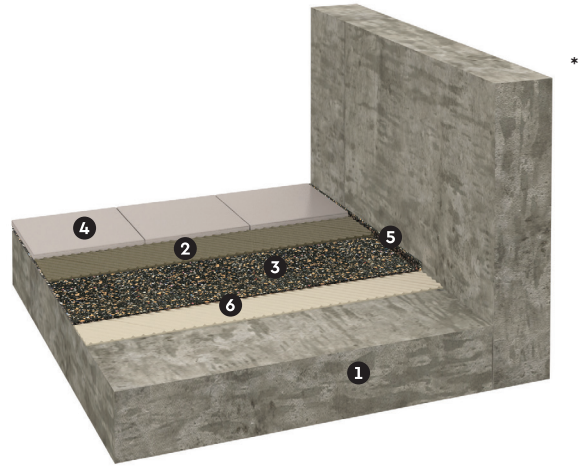
ACOUSTIC RESULTS

Impact insulation class (IIC | Δ IIC) · LVT floor (6mm)
· T04 (3mm) · Floating



INSTALLATION

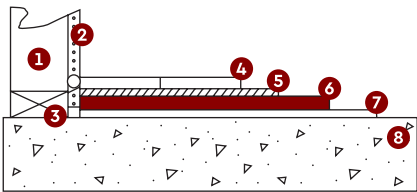
GLUED FLOORS



- ❶ Reinforced concrete slab
- ❷ Cement glue
- ❸ Agglomerated cork resilient layer – Acousticork T04
- ❹ Floor covering composed by glued down wood, ceramic or nature stone
- ❺ Perimeter insulation barrier (optional)
- ❻ Adhesive (optional)

*Product images and illustrations are for illustrative purposes only.

TEST APPARATUS (Δ L_w)



- ❶ Wall
- ❷ Wall board
- ❸ Perimeter isolation barrier (optional)
- ❹ Ceramic tile or natural stone
- ❺ Adhesive (recommended flooring producer)
- ❻ Acousticork T04
- ❼ Adhesive (recommended flooring producer)
- ❽ Subfloor concrete slab

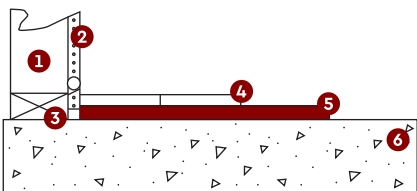
NON GLUED FLOORS



- ❶ Reinforced concrete slab
- ❷ Agglomerated cork resilient layer – Acousticork T04
- ❸ Perimeter insulation barrier (optional)
- ❹ Vapor barrier (for wood based flooring)
- ❺ Floor covering composed by non glued wood floor

*Product images and illustrations are for illustrative purposes only.

TEST APPARATUS (Δ L_w)



- ❶ Wall
- ❷ Wall board
- ❸ Perimeter isolation barrier (optional)
- ❹ LVT
- ❺ Acousticork T04
- ❽ Subfloor concrete slab

GENERAL INSTALLATION INSTRUCTIONS

The following installation instructions are recommended by Amorim Cork Solutions, but are not intended as a definitive project specification. They are presented in an attempt to be used with recommended installation procedures of the flooring installer.

Final Flooring

Always follow manufacturers recommended installation instructions, particularly when adhesives are recommended.

Recommended Adhesives

Ceramic: Flexible Cement Glue.

Wood: polyurethane wood flooring adhesive.

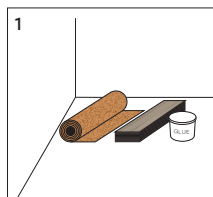
Important Notes

Never mechanically fasten the Acousticork T04 to the flooring floor as this will severely diminish its acoustical value.

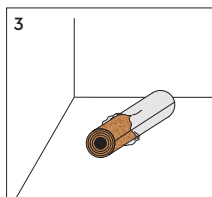
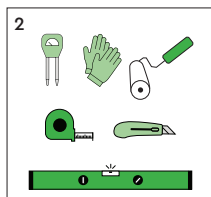
For more detailed installation instructions, please contact us.

Never install a wood or laminate floor without vapor barrier (integrated or applied before the underlayment).

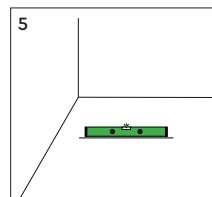
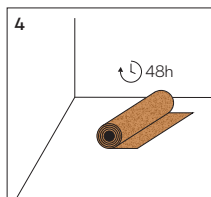
APPLICATION PROCESS · GLUED FLOOR



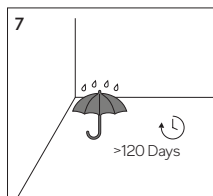
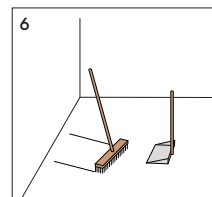
These are all the materials needed to install the underlayment.



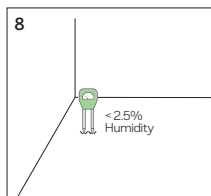
For the installation process, open the packaging 48 hours in advance and leave for acclimatization



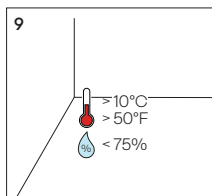
Subfloor preparation: Make sure that the subfloor is leveled, dry, clean and in good structural conditions.



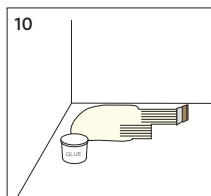
New concrete slabs must be left to cure for 120 days before installation.



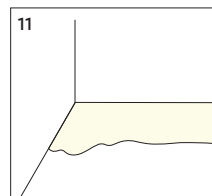
The humidity content of the substrate is critical: it must not exceed 2.5% (MC).



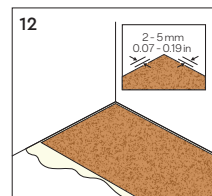
Air temperature should be above 10°C and air humidity below 75%.



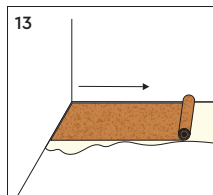
Optional step: apply the glue using a trowel. The installation of a moisture barrier is not necessary.



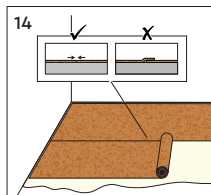
Optional step: we recommend the use of an adequate glue for the flooring to be installed.



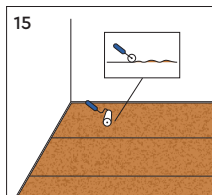
Install the underlayment directly on the adhesive, leave a space between the wall and the underlayment.



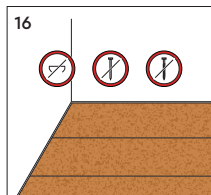
The underlayment should be installed in a perpendicular direction that you plan to install the final floor.



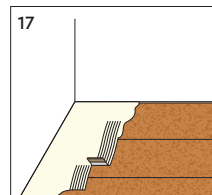
The underlay must cover the entire area without any gaps nor overlaps.



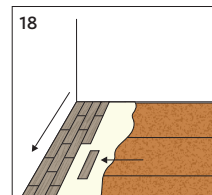
Use the paint roller to make sure the underlayment doesn't have any waves.



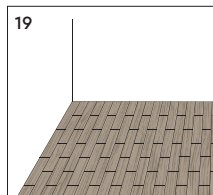
Never mechanically secure the underlayment with screws, nails or staples, since this may undermine its effectiveness.



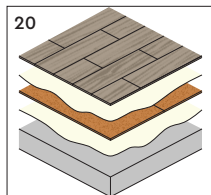
Apply the same glue on the underlayment.



Install the flooring in a perpendicular direction to the underlayment, and let the whole floor dry completely before you start to use it.

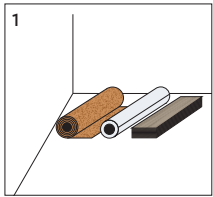


Always follow the flooring manufacturer's recommended installation instructions.

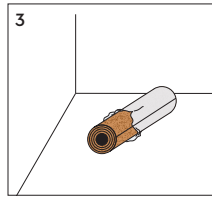
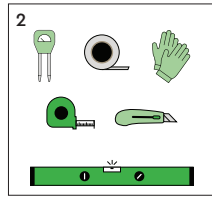


Total System.

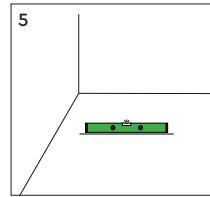
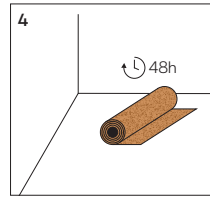
APPLICATION PROCESS · FLOATING FLOOR · NON-VAPOR BARRIER UNDERLAYMENT



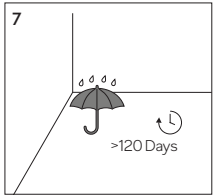
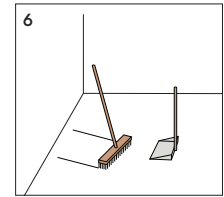
These are all the materials needed to install the underlayment.



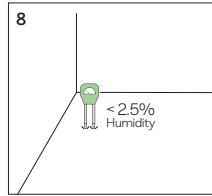
For the installation process, open the packaging 48 hours in advance and leave for acclimatization



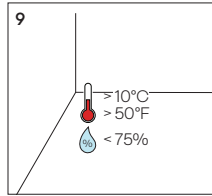
Subfloor preparation: Make sure that the subfloor is leveled, dry, clean and in good structural conditions.



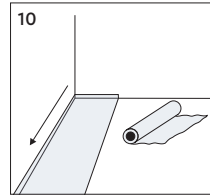
New concrete slabs must be left to cure for 120 days before installation.



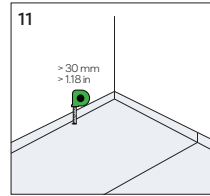
The humidity content of the substrate is critical: it must not exceed 2.5% (MC).



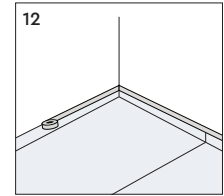
Air temperature should be above 10°C and air humidity below 75%.



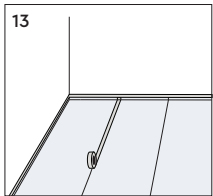
You must first install a moisture barrier across the entire area of the room. It should be installed following the outline of the enclosing wall.



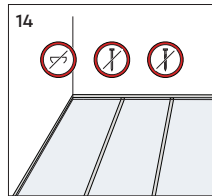
Use a height of at least 30 mm and with a minimum overlap of 100mm using a sealing tape to seal the seams.



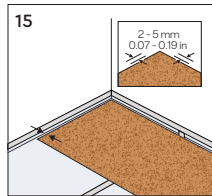
The barrier must be installed directly onto the surface of the subfloor. Use a sealing tape to seal the rows securely together.



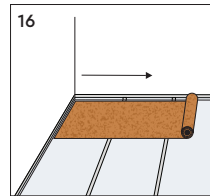
The installation should be in the opposite direction you plan to install the underlay to reduce seams, in the same direction of the final floor.



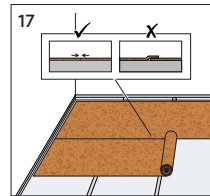
Never mechanically secure the barrier with screws, nails or staples, since this may undermine its effectiveness.



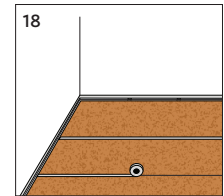
Leave a little space between the wall and the underlayment.



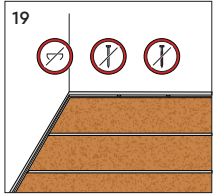
The underlayment should be installed in a perpendicular direction to the final floor, which should always be installed in the direction of natural light incidence in the room.



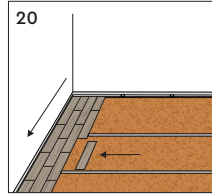
The underlayment must cover the entire area without any gaps nor overlaps.



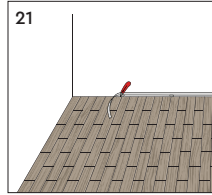
To securely joined using sealing tape.



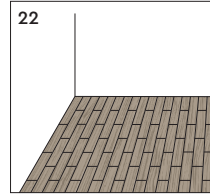
Never mechanically secure the underlayment with screws, nails or staples, since this may undermine its effectiveness.



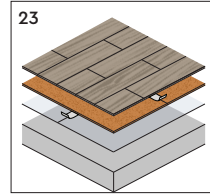
Install the flooring in a perpendicular direction to the underlayment.



Cut off excess moisture barrier.



Always follow the flooring manufacturer's recommended installation instructions.



Total System.

TECHNICAL DATA SHEET T04 MAXIMUM

The data provided in this Technical Data Sheet represents typical values. This information is not intended to be used as a purchasing specification and does not imply suitability for use in a specific application. Failure to select the proper product may result in either equipments damage or personal injury. Please contact Amorim Cork Solutions regarding specific application recommendations. Amorim Cork Solutions expressly disclaims all warranties, including any implied warranties or merchantability or of fitness for a particular purpose. Amorim Cork Solutions is not liable for any indirect special, incidental, consequential, or punitive damages as a result of using the information listed in this TDS. Any of its material specification sheets, its products or any future use or re-use of them by any person or entity. For contractual purposes, please request our Product Specifications Sheet (PDA).